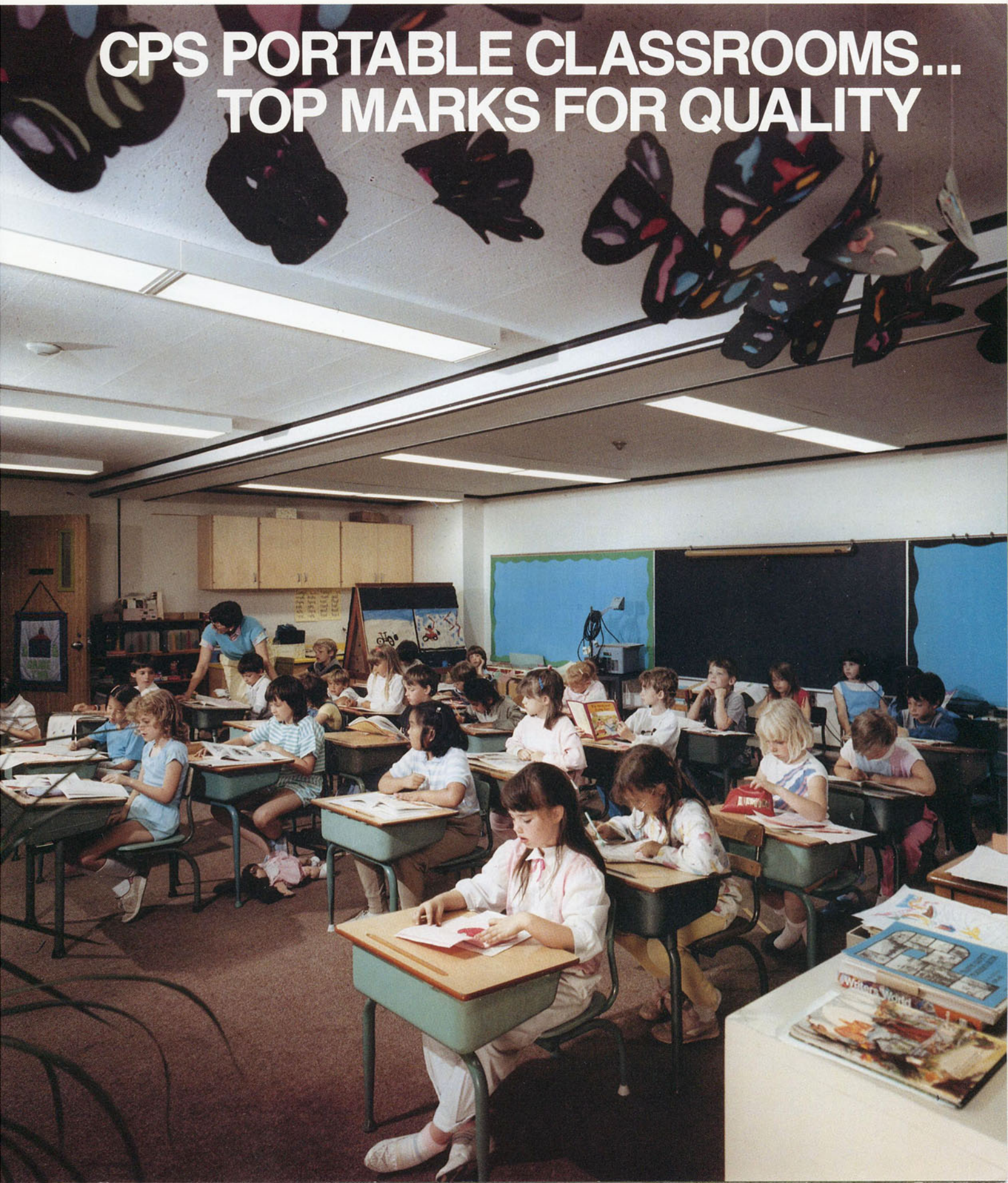


# CPS PORTABLE CLASSROOMS... TOP MARKS FOR QUALITY



# BUY OR LEASE

## Over 25 year's experience

Thousands of Canadian students have taken all or part of their education in CPS portable classrooms. We've been making them for over a quarter of a century and they get better year after year. Today's CPS classrooms are as bright, comfortable and energy efficient as a permanent school building. They can be freestanding or connected to an existing structure. Standard single units are available on short notice. Special applications or multi-unit complexes take a little longer. Our engineering department will work with your school board to meet your needs exactly.

## The versatile space solution

CPS portables are solving space problems for all kinds of institutions. You'll find our buildings at public and private schools, day care facilities, pre-schools and training centres. Our multi-unit complexes are as versatile as your needs. We can include washrooms, laboratories, kitchens, offices, staff rooms, utility and storage rooms, chapels, cafeterias... even exercise rooms.

## Low-cost maintenance and operation

Most interior surfaces in a CPS classroom come clean with standard cleaning compounds. Outside surfaces can usually be returned to their original lustre with a sponge and hose. Our buildings are energy efficient too. Floors, walls, ceilings and doors are all fully insulated to minimize heating bills. Double glazed windows add to the energy savings. All CPS classrooms are pre-wired for heating, lighting and ventilation. Air conditioning can be installed for summer school use.

## Buy or lease

If you prefer to lease rather than buy, CPS classrooms are available for terms as short as one year. With our convenient Leasing Plan, monthly payments stay fixed for the term of the lease you choose.

## Guaranteed quality

CPS is recognized as Canada's leader in the design and manufacture of portable buildings. Our classrooms are built to meet or exceed national and Ontario building codes and Ministry of Education standards. Moreover, CPS Portable Classrooms carry a full year guarantee against defects in workmanship and materials.

## Durable construction

In addition to strong structural components, CPS finishes all interior and exterior surfaces for maximum durability. We use enamelled steel siding, fire retardant vinyl covered wall boards, vinyl floor tiles and replaceable acoustic ceiling tiles. Check page four of this folder, for more of our high quality specifications.



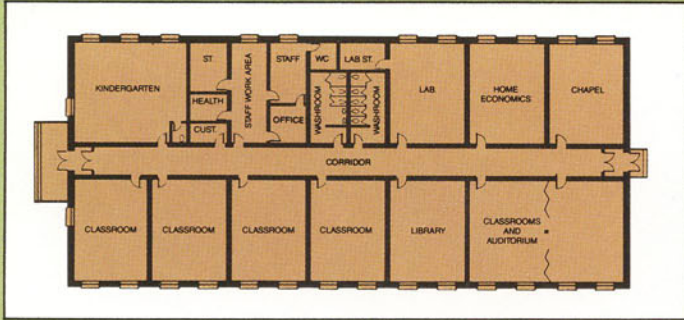
Typical corridor - multi unit complex



St. Ann's, Penetanguishene - 6 unit complex

Ottawa 10 unit relocatable classroom addition

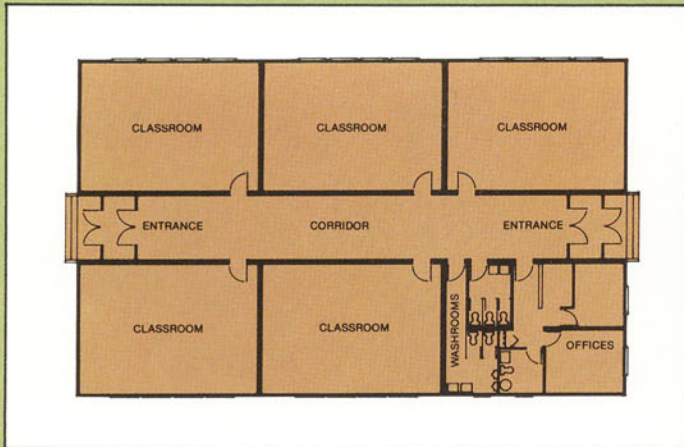




Floor plan – Christian Academy, London, Ontario



Typical four unit complex – Froebel Kindergarten, Mississauga



Floor plan – St. Ann's, Penetanguishene



Steel Frame Portapak, Winona Public School



Standard Mark III Single Portable Classroom

Centennial College, Scarborough – 15 unit relocatable classroom addition



# CPS MARK III BASIC PORTABLE CLASSROOM SPECIFICATIONS

The following are basic specifications for a typical 32' x 24' Mark III classroom. We can customize any building or complex to your particular requirements.

## Size

Classroom is formed by two sections each measuring 11'9" x 32'0" overall. Outside measurements 23'6" x 32'0" when units are connected together at site. (Clear inside measurements 22'9" x 31'4".)

## Foundations for normal conditions

Two only 4" x 24" x 20" plus 13 only 4" x 18" x 18" precast concrete pads and 15 - 8" x 8" x 16" solid concrete blocks set on grade.

## Floor Construction

Laminated spruce beams at outside walls and centre split. Floor joists are 2" x 8" at 16" centres with 4 rows of solid blocking, 5/8" tongue and groove select grade plywood flooring. 3-1/2" fibreglass insulation. Insulation is supported with perforated polyethylene. Skirting is to grade level and is painted with two coats of quality exterior enamel.

## Floor Finishing

.080 gauge 12" x 12" vinyl tile.

## Exterior Wall

2" x 4" spruce studs at 16" O.C. 3-1/2" insulation with integral vapour barrier, 1/4" thick rigid wall sheathing. Building paper and 28 ga. vertical rib steel siding with a baked-on paint finish.

## Interior Wall Finish

Half inch vinyl covered gypsum board with vertical black batten strips at 4' centres. (Neutral colour.) 2-1/2" black baseboard. Pine casing on doors and windows with two coats of paint.

## Ceiling Finish

Suspended system with metal tracks and 2' x 4' non-combustible acoustic tile. Ceiling height is approx. 8'0".

## Roof Construction

36" N.I.S. roll roofing completely sealed with N.I.S. roofing cement. 7/16" roof sheathing, 2" x 8" spruce rafters at centres designed to suit snow load requirements. 2" x 4" ceiling joists at 24" O.C. 6" insulation with integral vapour barrier to ceiling roof vents.

## Roof Beams

A multi-ply engineered beam, 32'0" long. Depth and width of beam varies with area ground snow load.

## Heating

A minimum of 9 kilowatts of electrical baseboard heat with thermostats mounted on units.

## Electrical

100 amp. service with 13 circuit breaker type panel. Total of 16 surface mounted, two-tube fluorescent fixtures controlled by two switches at door. Two duplex outlets on separate circuits with one outlet at rear and one at front of room. One clock outlet. One exhaust fan with wire mesh guards and a two speed switch. All wiring is complete including exterior service riser and meter base ready for connection by School Board.

## Windows

Sliding windows with wood frames, vinyl track, 4 mm thick glass and interlocking vinyl meeting rails.

## Exit Doors (2)

Insulated steel slab doors, 3'0" x 6'8", full weather-stripping, heavy-duty classroom lock and check chain. 5'0" x 4'0" wood porch, handrail and steps. Ten foot section of eavestrough over doors.

## Chalkboards

All chalkboards are half inch thick vitrite with heavy duty aluminum chalk trays. Two 4' x 7'6" chalkboards on front wall and one 4' x 8' chalkboard on side wall. One 4' x 6' half inch natural cork tackboard on side wall. Map rail over all chalkboards including six map hooks. Colour of chalkboards is black.

## Options

- steel non-combustible framing system — relocatable portapak units
- custom sizes & layouts — multiple unit complexes
- various exterior finish treatments... sliced brick, aluminum, wood siding
- heavy gauge steel exterior siding and roofing
- carpet     vinyl sheet flooring
- upgraded insulation values, for greater comfort & fuel economy
- special locks & hardware
- heavy framing members in floor, walls & roof
- windows & doors to suit your size, quantity & floor layout requirements
- heavy floor loading for libraries & storage rooms
- air conditioning — unit or central systems
- washroom & kitchen facilities
- cabinets, teacher's closets, book shelves, coat racks, desks
- protection alarms for smoke, fire & intrusion
- window shades, drapes, blinds
- wire mesh window guards
- P.A. systems



**CANADIAN PORTABLE STRUCTURES LTD.**

4400 Corporate Drive, Burlington, Ontario, Canada L7L 5R3

Phone: 905 335 5500