

BUY, RENT OR LEASE



 SENTINEL  
GUARD  
HOUSE  
BUILDINGS



# Security for your plant. . . year round comfort for your guards.

Each year, millions of dollars worth of equipment, technology and products are stolen from industrial plants and warehouses. Some of this costly shrinkage is the work of unauthorized personnel but all too often, employees look at theft as part of their pay package.

CPS Sentinel Security Buildings won't, in themselves, prevent theft, but they do help control the comings and goings of those responsible for shrinkage in the workplace.

CPS Guard Houses are at the core of many industrial security programs. They provide an efficient, climate controlled headquarters for security personnel. A variety of styles and sizes is available from simple one-person kiosks to custom multi-room units with washroom facilities.

Sentinel by-pass buildings come with either flush roof or overhanging roof for protection against the elements. Our Sentinel walk-through model requires all in-coming and outgoing personnel and visitors to pass a security check. Walk-through buildings often double as a fully climate-controlled shipping/receiving office.

All CPS Guard Houses are available with vertical steel siding, factory enamelled in a choice of 15 attractive colours, plus brick veneer on large custom models. For General Specifications see the back page of this folder. For custom designs and pricing contact our head office or local distributor.

## Standard Exterior Colours

Tile Red	Int'l Orange	Barn Red
Bone White	Autumn Gold	White White
Saddle Tan	Holstein Black	Forest Green
Dark Brown	Beige	Cocoa Brown
Regent Grey	Charcoal	Slate Blue



Sentinel Guard House 3-1/2' x 5'.



Sentinel By-pass with overhanging roof.



Sentinel security and weigh scale building.



Sentinel custom



Sentinel two-storey check point for manifests and loads.



Sentinel walk-through model with work





Petro-Canada security headquarters — Oakville refinery.



building for controlling rail and vehicular traffic.



ounter.

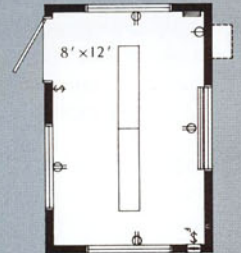
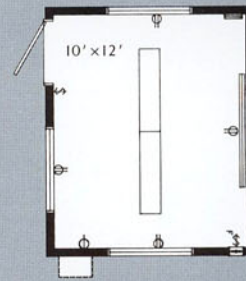
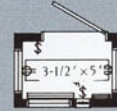


Sentinel custom building — Canada Post, Stoney Creek, Ont.

## Floor Plans

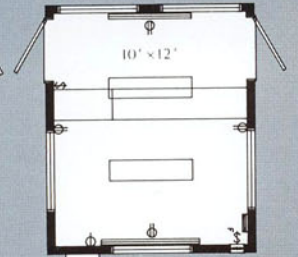
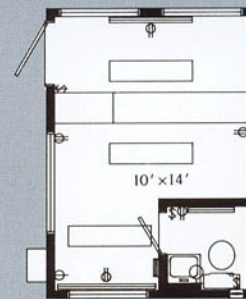
### Standard sizes — Sentinel by-pass model.

- 3-1/2' x 5'
- 5' x 7'
- 7' x 9'
- 10' x 10'
- 8' x 12'
- 10' x 12'

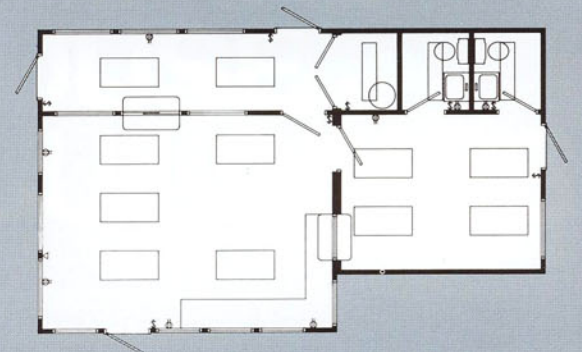


### Standard sizes — Sentinel walk-through model.

- 10' x 10'
- 10' x 12'
- 10' x 14'



### Sentinel Custom model.





## Standard Specifications

### Floor Frame

Structural wood floor joists and multi-ply beams to suit 50 lbs/sq. ft. floor loading and span. 5/8" thick panel T&G sub-floor fastened securely (glued and nailed for added strength) to floor joists. All joints are sanded smooth and filled as necessary.

### Wall Frame

Walls have 2" x 4" wood studs with single bottom plates and double top plates. Window and door lintels to suit opening. 1/4" thick rigid exterior wall sheathing securely fastened to studs.

### Roof Frame

Structural wood roof joists to suit 50 lbs/sq. ft. (min.) or local area ground snow load and span. 7/16" thick rigid roof sheathing fastened securely to roof joists.

### Insulation (Fibreglass Blanket)

Floor — 6" fibreglass insulation (R20)  
Walls — 3-1/2" fibreglass insulation (R12)  
Roof — 6" fibreglass insulation (R20)  
6 mil poly vapour barrier

### Interior Finish

Floor — 1/8" x 12" x 12" vinyl composite floor tile. 2-1/2" black vinyl baseboard.  
Walls — Easy care vinyl covered 1/2" thick gypsum board with colour matched vertical vinyl joint strips. Flame spread rating 25.  
Ceiling — Suspended system with metal tracks and 2' x 4' non-combustible white acoustic tile. Flame spread rating 25. Clear floor to ceiling height approximately 7' 5"

### Exterior Finish

Roof — Galvanized steel weatherproof.  
Walls — 29 ga. ribbed steel siding and trims with maintenance free baked enamel finish in a choice of colours.  
Underfloor — 1/4" rigid sheathing glued and nailed to joists.

### Entrance Door

1-3/4" x 3' 0" x 6' 8" steel insulated door pre-hung in frame complete with 20" x 32" insulglass light. 1-1/2" pair butt hinges, keyed lockset, weatherstripping, sweep seals, threshold and check chain. Frame sealed with butyl based sealant.

### Windows & Vents

Aluminum frame windows — thermally broken. Fixed or sliding insulglass lights. Quantity and size varies with layout. Frames sealed with butyl based sealant. Insulated air intake vent complete with gravity operated louvres.

### Counters

Walk-through models include 24" wide counter with lift-up top.

### Electrical

CSA approved fixtures. Wired to electrical code and Ontario Hydro inspected. Standard pre-wired electrical package includes surface-mounted 1' x 4' fluorescent light fixtures with acrylic plastic lens complete with switch and lamps. Duplex electrical receptacles. Exterior service entry conduit passes through wall for ease of hook-up to breaker type circuit panel with main & branch breakers. 240 volt fixed baseboard heater with built-in thermostat. All wiring concealed in walls and roof. Check layout or quote for equipment capacities, quantities and locations.

### Steel Base Supports

Tubular steel 3" x 8" x 2" high steel supports. (2" clearance for fork truck lifting access.)

"Specifications are subject to change without notice where required to enhance the value of our Buildings."

## Standard Options

- Air conditioner units wall or roof
- Provision for future air conditioner
- Forced air electric heaters (wall or ceiling)
- Gas/propane heaters
- Phone/computer (EMT) conduit
- Dimmer controls for interior lighting
- Additional electrical outlets
- Special door hardware, closers, panic exit, locks, kick plates
- Additional doors hinged or sliding
- Additional fixed or sliding windows
- Special glazing, safety, wired, tinted
- Upgrade thermal insulation
- Carpeting or one piece flooring
- Washroom facilities
- Traffic control arms
- Two storey units
- Custom layouts and sizes
- Counters, plan tables, cabinets
- Various exterior finish treatments
- Smoke/heat/intrusion alarms
- Special lighting recessed/pot/dimming/ exterior/photocell/emergency
- Kitchenettes/water coolers
- Centralized heating and cooling systems
- Large capacity circuit breaker panels/ transformers
- H.D. vinyl sheet/rubber flooring
- Window blinds/shades/drapes
- Roof overhangs
- Steel frame non-combustible construction
- Fire protected wood frame 3/4 or 1 hr. rated
- Floorless units



For more information on any of the wide range of CPS buildings, phone or fax for these brochures.

CANADA'S STRENGTH IN PORTABLE STRUCTURES

**CPS** Canadian Portable Structures  
4400 Corporate Drive, Burlington ON L7L 5R3  
Phone: 905 335 5500 Fax: 905 335 1492